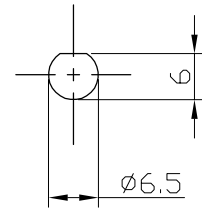
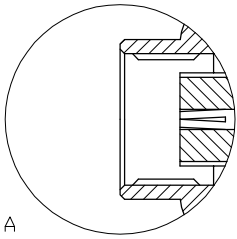
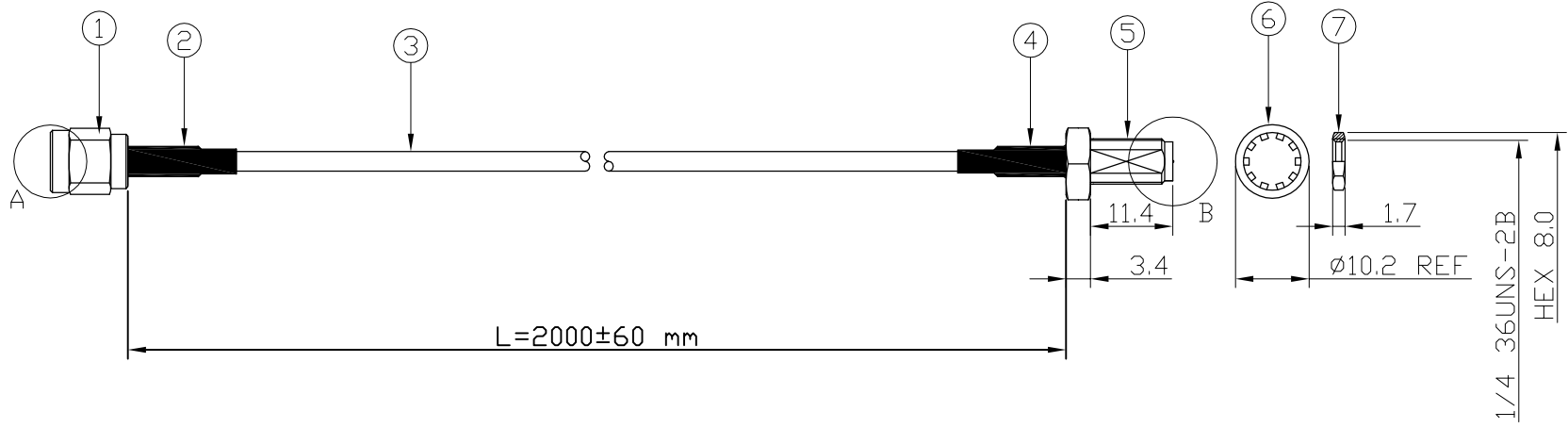
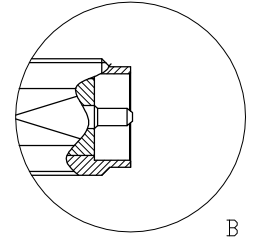


RoHS COMPLIANT

REVISIONS			
REV	DESCRIPTION	DATE	APPROVED
1.00	INITIAL DESIGN	2021/12/28	Kelly



RECOMMENDED MOUNTING HOLE



Note:
 (1) The orientation on drawing is for reference only. (圖面組裝方向性僅供參考)
 (2) 100% Continuity, Short circuit test.
 (3) Assembly according to IPC/WHMA-A-620. (依據IPC-A-620標準組裝)

Wellshow Technology Co., Ltd
 TEL:+886-3-3700979 FAX:+886-3-3700955
[Http://www.rfcoaxcable.com](http://www.rfcoaxcable.com)

NO	DESCRIPTION	Q'TY	ITEM
07	Nut	1	
06	Washer	1	
05	RP SMA bulkhead Jack	1	C20AB31316D03C
04	Heatshrink (Black)	1	
03	RG174 Low Loss coaxial cable (Black)	2.04(M)	D174LXX5BT
02	Heatshrink (Black)	1	
01	RP SMA Straight Plug	1	C19AA31316D04A

TITLE RPSMA(M) st. to RG174LL(BK) to RPSMA(F) st. bh., L=2M			
DWG NO. 211224-01	CUST. P/N: N/A	UNIT mm	REV. 1.00
GENERAL TOLERANCES .X N/A .XX N/A .XXX N/A ANGLES N/A		SCALE 1 : 1	APPROVALS
(UNLESS OTHERWISE SPECIFIED)		SIZE A4	DATE
			DRAWN BY: Kelly 2021/12/28
		SHEET 1 of 1	CHK'D BY: Chili 2021/12/28
			APP'D BY: Chili 2021/12/28